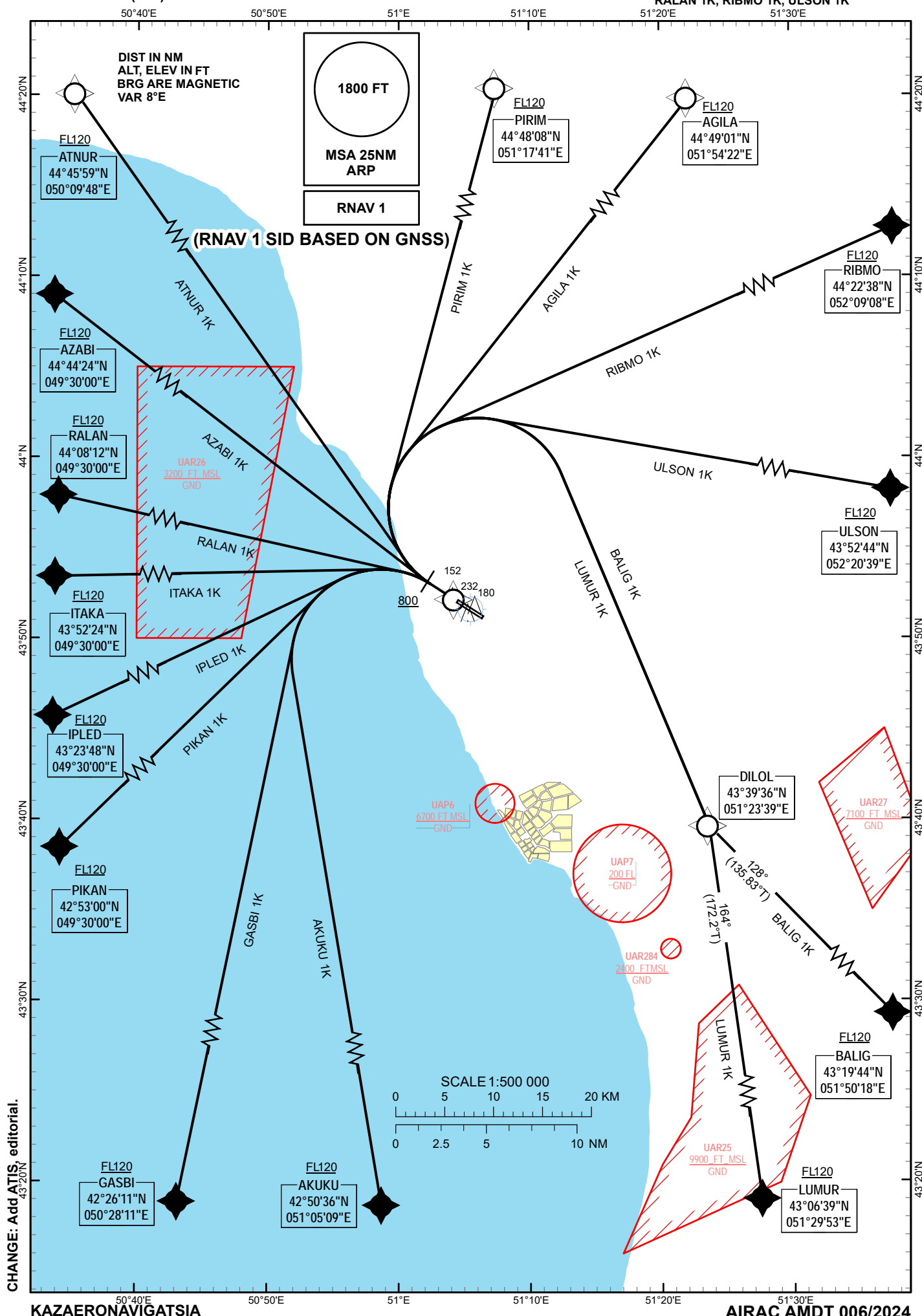


RNAV  
STANDARD DEPARTURE CHART -  
INSTRUMENT (SID) - ICAO

TRANSITION ALTITUDE  
10000 FT

AKTAU TOWER 120.7  
AKTAU ATIS (EN) 130.1  
AKTAU ATIS (RU) 126.2

AGILA 1K, AKUKU 1K, ATNUR 1K, AZABI 1K, AKTAU  
BALIG 1K, GASBI 1K, IPLED 1K, RWY 29  
ITAKA 1K, LUMUR 1K, PIKAN 1K, PIRIM 1K,  
RALAN 1K, RIBMO 1K, ULSON 1K



STANDARD DEPARTURE ROUTES – RNAV 1 (SID) AKTAU RWY 29	
<b>PIRIM 1K</b> Climb on RWY track to 800FT. Turn RIGHT direct to PIRIM. Cross PIRIM at or above FL120 or as instructed by ATC.	<b>GASBI 1K</b> Climb on RWY track to 800FT. Turn LEFT direct to GASBI. Cross GASBI at or above FL120 or as instructed by ATC.
<b>AGILA 1K</b> Climb on RWY track to 800FT. Turn RIGHT direct to AGILA. Cross AGILA at or above FL120 or as instructed by ATC.	<b>PIKAN 1K</b> Climb on RWY track to 800FT. Turn LEFT direct to PIKAN. Cross PIKAN at or above FL120 or as instructed by ATC.
<b>RIBMO 1K</b> Climb on RWY track to 800FT. Turn RIGHT direct to RIBMO. Cross RIBMO at or above FL120 or as instructed by ATC.	<b>IPLD 1K</b> Climb on RWY track to 800FT. Turn LEFT direct to IPLD. Cross IPLD at or above FL120 or as instructed by ATC.
<b>ULSON 1K</b> Climb on RWY track to 800FT. Turn RIGHT direct to ULSON. Cross ULSON at or above FL120 or as instructed by ATC.	<b>ITAKA 1K</b> Climb on RWY track to 800FT. Turn LEFT direct to ITAKA. Cross ITAKA at or above FL120 or as instructed by ATC.
<b>BALIG 1K</b> Climb on RWY track to 800FT. Turn RIGHT direct to DILOL. Then on track 128° to BALIG. Cross BALIG at or above FL120 or as instructed by ATC.	<b>RALAN 1K</b> Climb on RWY track to 800FT. Turn LEFT direct to RALAN. Cross RALAN at or above FL120 or as instructed by ATC.
<b>LUMUR 1K</b> Climb on RWY track to 800FT. Turn RIGHT direct to DILOL. Then on track 164° to LUMUR. Cross LUMUR at or above FL120 or as instructed by ATC.	<b>AZABI 1K</b> Climb on RWY track to 800FT. Turn LEFT direct to AZABI. Cross AZABI at or above FL120 or as instructed by ATC.
<b>AKUKU 1K</b> Climb on RWY track to 800FT. Turn LEFT direct to AKUKU. Cross AKUKU at or above FL120 or as instructed by ATC.	<b>ATNUR 1K</b> Climb on RWY track to 800FT. Turn RIGHT direct to ATNUR. Cross ATNUR at or above FL120 or as instructed by ATC.

WAYPOINT LIST	
SID RWY 29	
Waypoint Identifier	Coordinates
DER	435402.6N 0510011.4E
PIRIM	444808.0N 0511741.0E
AGILA	444901.0N 0515422.0E
RIBMO	442238.0N 0520908.0E
ULSON	435244.0N 0522039.0E
DILOL	433936.0N 0512339.0E
BALIG	431944.0N 0515018.0E
LUMUR	430639.0N 0512953.0E
AKUKU	425036.0N 0510509.0E
GASBI	422611.0N 0502811.0E
PIKAN	425300.0N 0493000.0E
IPLD	432348.0N 0493000.0E
ITAKA	435224.0N 0493000.0E
RALAN	440812.0N 0493000.0E
AZABI	444424.0N 0493000.0E
ATNUR	444559.0N 0500948.0E

TABULAR DESCRIPTION										
RNAV 1 SID RWY 29										
Serial Number	Waypoint ID	Path Descriptor	Flyover	Course °M (°T)	Distance (NM)	Turn Direction	Altitude (ft)	Speed (kts)	VPA/TCH	Navigation Specification
PIRIM 1K										
010	-	CA	-	295 (302.6)	3.6	-	+800	-	-	RNAV1
020	PIRIM	DF	-	-	-	R	+FL120	-	-	RNAV1
AGILA 1K										
010	-	CA	-	295 (302.6)	3.6	-	+800	-	-	RNAV1
020	AGILA	DF	-	-	-	R	+FL120	-	-	RNAV1
RIBMO 1K										
010	-	CA	-	295 (302.6)	3.6	-	+800	-	-	RNAV1
020	RIBMO	DF	-	-	-	R	+FL120	-	-	RNAV1
ULSON 1K										
010	-	CA	-	295 (302.6)	3.6	-	+800	-	-	RNAV1
020	ULSON	DF	-	-	-	R	+FL120	-	-	RNAV1
BALIG 1K										
010	-	CA	-	295 (302.6)	3.6	-	+800	-	-	RNAV1
020	DILOL	DF	-	-	-	R	-	-	-	RNAV1
030	BALIG	CF	-	128 (135.83)	-	-	+FL120	-	-	RNAV1
LUMUR 1K										
010	-	CA	-	295 (302.6)	3.6	-	+800	-	-	RNAV1
020	DILOL	DF	-	-	-	R	-	-	-	RNAV1
030	LUMUR	CF	-	164 (172.2)	-	-	+FL120	-	-	RNAV1
AKUKU 1K										
010	-	CA	-	295 (302.6)	3.6	-	+800	-	-	RNAV1
020	AKUKU	DF	-	-	-	L	+FL120	-	-	RNAV1
GASBI 1K										
010	-	CA	-	295 (302.6)	3.6	-	+800	-	-	RNAV1
020	GASBI	DF	-	-	-	L	+FL120	-	-	RNAV1
PIKAN 1K										
010	-	CA	-	295 (302.6)	3.6	-	+800	-	-	RNAV1
020	PIKAN	DF	-	-	-	L	+FL120	-	-	RNAV1
IPLD 1K										
010	-	CA	-	295 (302.6)	3.6	-	+800	-	-	RNAV1
020	IPLD	DF	-	-	-	L	+FL120	-	-	RNAV1
ITAKA 1K										
010	-	CA	-	295 (302.6)	3.6	-	+800	-	-	RNAV1
020	ITAKA	DF	-	-	-	L	+FL120	-	-	RNAV1
RALAN 1K										
010	-	CA	-	295 (302.6)	3.6	-	+800	-	-	RNAV1
020	RALAN	DF	-	-	-	L	+FL120	-	-	RNAV1
AZABI 1K										
010	-	CA	-	295 (302.6)	3.6	-	+800	-	-	RNAV1
020	AZABI	DF	-	-	-	R	+FL120	-	-	RNAV1
ATNUR 1K										
010	-	CA	-	295 (302.6)	3.6	-	+800	-	-	RNAV1
020	ATNUR	DF	-	-	-	R	+FL120	-	-	RNAV1